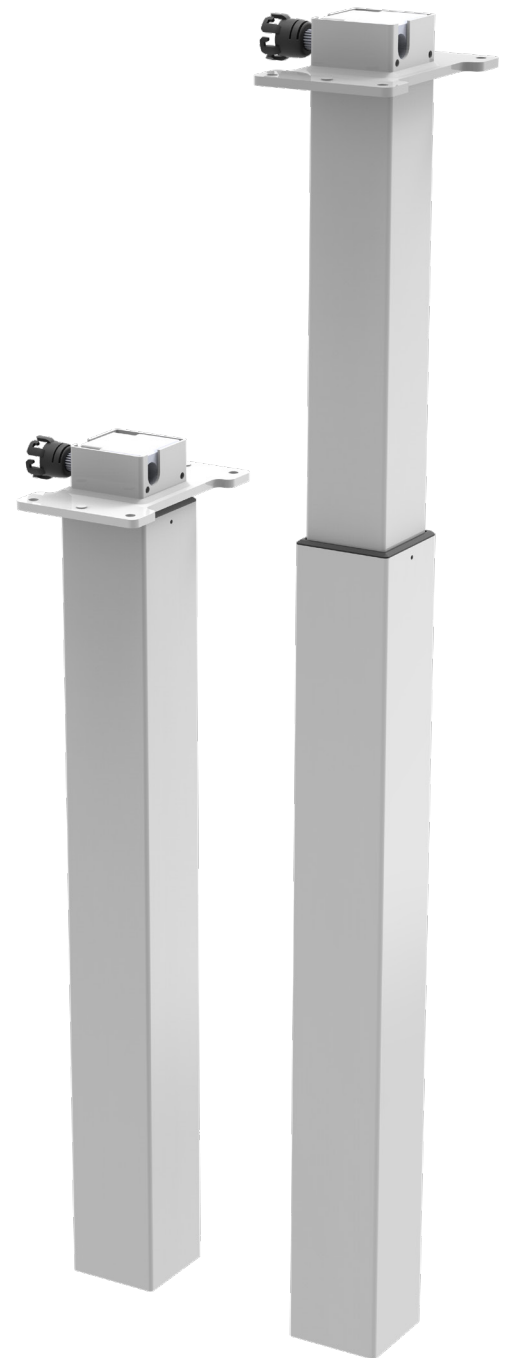


## Column - Solo

<b>Dimension</b>	70 x 70 - 60 x 60 mm
<b>Stroke</b>	500 mm
<b>Column height</b>	645 mm
<b>Max. load, both columns</b>	90 kg, equally divided on complete frame
<b>Speed, 0-80 kg load</b>	32 mm/sec
<b>Noise level</b>	44 dB
<b>Duty cycle</b>	10%, max 1 min. run / 9 min. stop
<b>Ambient Temperature</b>	0 - 45 C°
<b>Storage and transport temp.</b>	(20) – 70 C°
<b>Friction-control</b>	100%
<b>Motor-brake</b>	Patented by TIMOTION
<b>Wiper</b>	Optional colors
<b>Invisible inlay</b>	Optional



## CE mark - EN standards / tests

The column is CE-marked for a partly completed machinery, according to following directives (Documentations / Technical Dossier upon request):

The machinery directive 2006/42/EC

The EMC directive 2004/108/EC

The LVD directive 2006/95/EC

RoHS compliant, according to directive 2011/65/

EU & REACH compliant, according to directive EC 1907/2006

## Other standards / tests

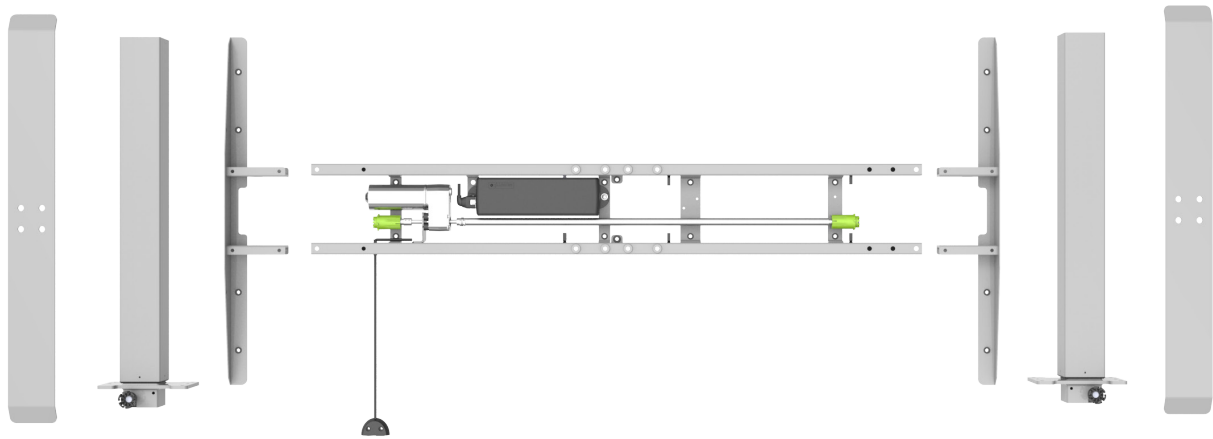
EN ISO 2409:2007

EN 13849

Sound Emission from DTI

## 12 standard colors

Please request for separate color chart



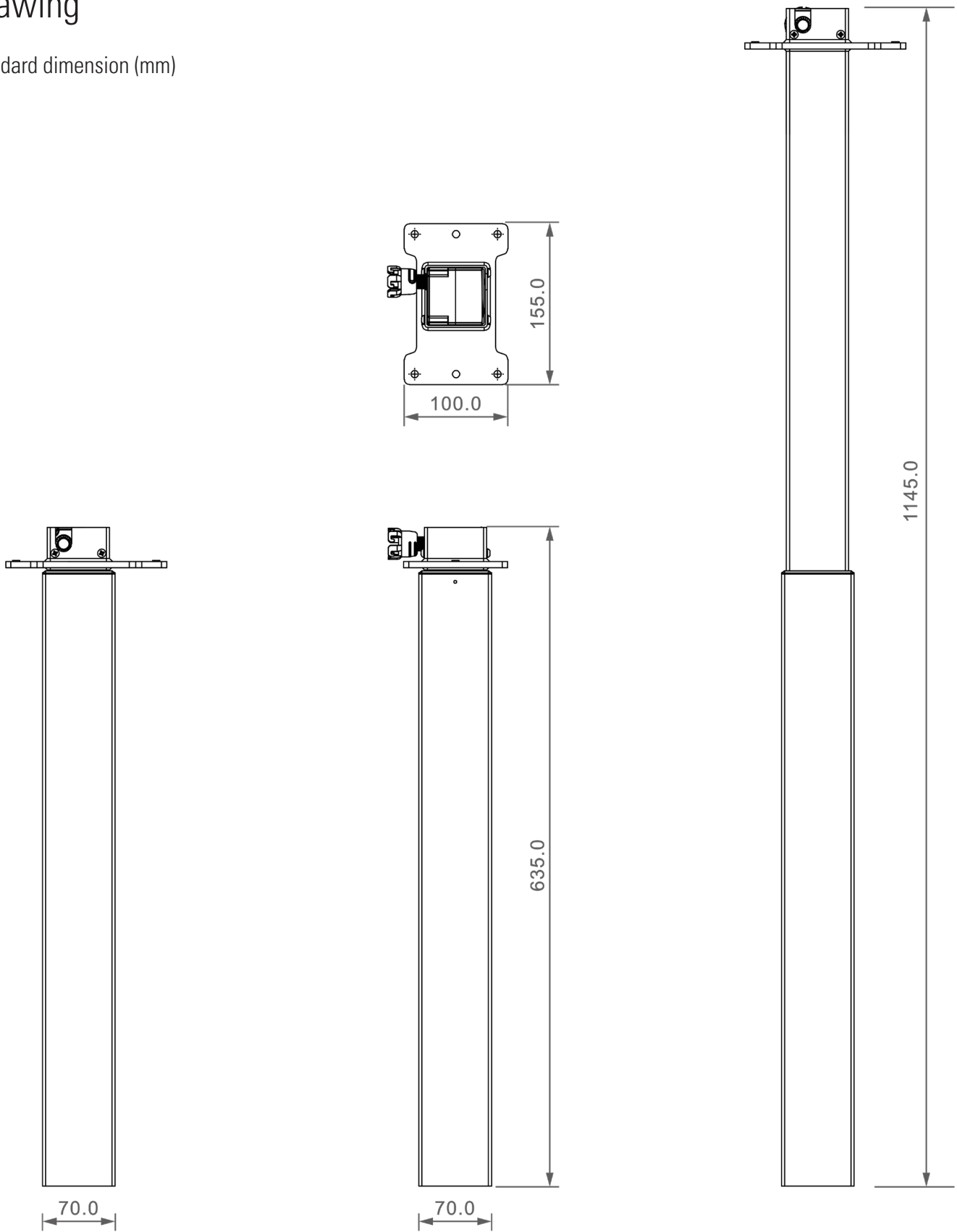
Dimension, frame length: 1050 – 1600 mm  
frame height: 675 – 1175 mm

<b>Top frame including 1 motor</b>	1 pcs
<b>Column</b>	2 pcs
<b>End pipe</b>	2 pcs
<b>Slanted feet</b>	2 pcs
<b>Control box TC11</b>	1 pcs
<b>Handset TH37</b>	1 pcs









## Drawing

Standard dimension (mm)



## Marking on labels

	CE mark
	General warning sign <a href="https://www.iso.org/obp/ui/#iso:grs:7000:4:0434A">https://www.iso.org/obp/ui/#iso:grs:7000:4:0434A</a>
	Class II – double insulation <a href="https://en.wikipedia.org/wiki/Appliance_classes">https://en.wikipedia.org/wiki/Appliance_classes</a>
	Indoor use
	WEEE <a href="http://en.wikipedia.org/wiki/Waste_Electrical_and_Electronic_Equipment_Directive">http://en.wikipedia.org/wiki/Waste_Electrical_and_Electronic_Equipment_Directive</a> The electrical device can't be randomly discarded
	Type Approved safety regular production surveillance, which means that the product is ready for GS mark